



Be'er Sheva Cultural Stage Info Session

*For everyone interested
in holding an event at the nu stage!*

Flow

- Introductions
 - Stage Specs/Overview/History
 - Review Steps to Holding an Event @ Be'er Sheva
 - Review Equipment available
 - Q&A
 - Close out
-

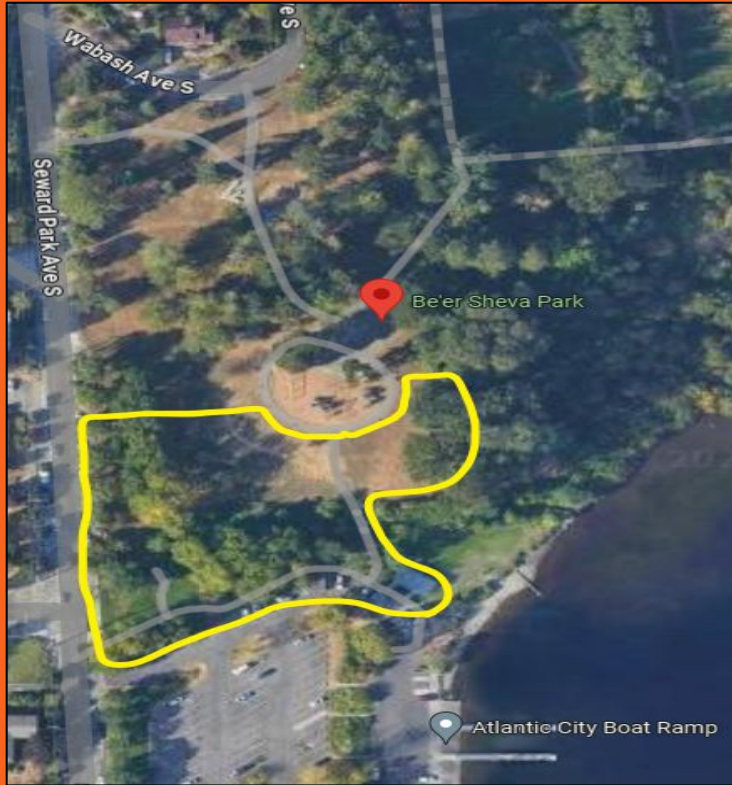
Stage Pics



Stage Use



Park Layout & Permit Boundaries



How and Why?

The Rainier Beach community advocated for an outdoor covered performance stage that would be accessible to young people, artists, and community members - with Rainier Beach residents getting first dibs.

Cultural Stage Collective started meeting last Spring 2023 of neighborhood cultural workers, artists and organizations to build upon the vision for the stage and curate the community programming.

Worked with SPR to ensure community access has limited barriers and is FREE! Free Permits, Vendors don't pay 30%, funds for community access.

Check out more: rbculturalstage.com

STEPS TO HOLDING AN EVENT @ BEER SHEVA'S CULTURAL STAGE!

The redesign of this park is meant to benefit YOU, Rainier Beach! We want to support local community members and orgs to hold events throughout the year. We have some equipment available, and depending on your idea, we can find ways to make that equipment accessible for your event!

1

Make sure you have an idea and at least a small team to help execute!

2

Follow this QR Code to submit the details about your events



3

Schedule a consultation to determine what ways ____ can support (equipment)

4

Promote your event to get the best turn out possible!

5

DO THE THANG!



STEP 1

Have an idea for an event!!

...is it just an IDEA or is a THOUGHT?

An idea should be more developed and include others to help execute. These types of events are difficult to do alone, so we encourage folx to have a team if they are interested in holding an event at the stage.

Don't have a team? Consider the following steps so you can see why we encourage a team approach to these events.

STEP 2



This link will lead you to an intake form. This is where you will input the information and details about your potential event.

Sweet new
sound
system!

Access to
Tech & AV
support:
SkyLit
Designs

Starter PA Package

Rainier Beach Cultural Stage



A&H 48ch SQ5 Digital Mixer

professional sound
board creating
high quality sound



A&H 24x12 Stagebox

pairs with the SQ5 Mixer
allowing easy access to
hook up all your mics and
monitors



JBL EON715 15in Powered Speaker

completing the PA system
with 1300w of clean and
large coverage of crisp
sound



Shure BLX288 Wireless Handheld

vocal-optimized
microphones great for
both lead and
background vocals



Behringer 12in Floor Monitor

provides a clear true
sense of your
performance



Mic Stands

plenty of stands to hold up
your instrument and vocal
microphones

Blow up move
screen &
Projector

YOU MIGHT BE WONDERING, WHAT KINDS OF "SUPPORT"?

Example 1:

Wanna host a "movie night?"

We can help provide **quality sound equipment/speakers** and a nice sized **projector screen**...You would need to provide the movie though, most likely on a laptop of your own!

Example 2:

There is an staple event called "Floetry in the Park" where different spoken word artists, musicians, singers, and speakers come together to share space, food, and vibrations. We can help by providing **quality sound equipment/speakers, microphones, and audio support**...you would need to provide the talent, music, and vibes!

We can help get folx access to **technical support -
but when it comes to **HOSTING** the event, that is all you!**

We cannot help with advertising, promotion, procuring talent, or paying people.

**If that isn't clear, or you still have questions, come to an Info Session
or send an email to beershevaculturalstage@gmail.com**



SKYLIT
by design



STEP 3

- 1. After filling out the form, you will hear within 48 hours if the date requested is available.**
 - 2. If you need equipment, and/or technical support:
Schedule consultation with SkyLit Designs, LLC**
-

\$0

PACKAGE A

- Events require no technicians and no equipment
- Reserver will provide their own equipment and operators if needed

Ideal for personal events

\$400

PACKAGE B

- Equipment: Starter PA System (FREE)
- Technicians: 1 tech for a minimum of 8hrs (\$480)

Ideal for open mics, gatherings, etc.

\$800

PACKAGE C

- Equipment: Starter PA System (\$399)
- Technicians: Minimum of 2 techs for a minimum of 8 hours (\$480)

Required for festivals >8hrs

\$900

PACKAGE D

- Equipment: Starter PA System + Projection system (\$480)
- Technicians: Minimum of 2 techs for a minimum of 8 hours (\$480)

Ideal for movie nights

\$100+

PACKAGE E

PAY WHAT YOU CAN!

- Equipment: Starter PA System and/or Projection system
- Technicians: Minimum of 2 techs for a minimum of 8 hours

STEPS TO HOLDING AN EVENT @ BEER SHEVA'S CULTURAL STAGE!

The redesign of this park is meant to benefit YOU, Rainier Beach! We want to support local community members and orgs to hold events throughout the year. We have some equipment available, and depending on your idea, we can find ways to make that equipment accessible for your event!

1

Make sure you have an idea and at least a small team to help execute!

2

Follow this QR Code to submit the details about your events



3

Schedule a consultation to determine what ways ____ can support (equipment)

4

Promote your event to get the best turn out possible!

5

DO THE THANG!



Q & A
